

BoardMasterNOVA

- Quality Grading for the Future



FinScan

ENG-US-CA-16

BoardMasterNOVA

BoardMasterNOVA-N is a non-turning auto-grading scanner. Complete analysis of boards is performed in 10 different directions including accurate defect detection and reliable optimization results.

Based on required grades the system optimizes boards giving detailed instructions for trimming, cutting, ripping and sorting. BoardMasterNOVA-N has comprehensive graphical reporting tools for operators, production planners and top management.

The FinScan grading systems can be easily installed in the existing or new grading lines.



Large screen for the operators

BoardMasterNOVA features

- Grading speed upto 240 boards / minute
- 100 % of the board analyzed

Grading systems

BoardmasterNOVA-N

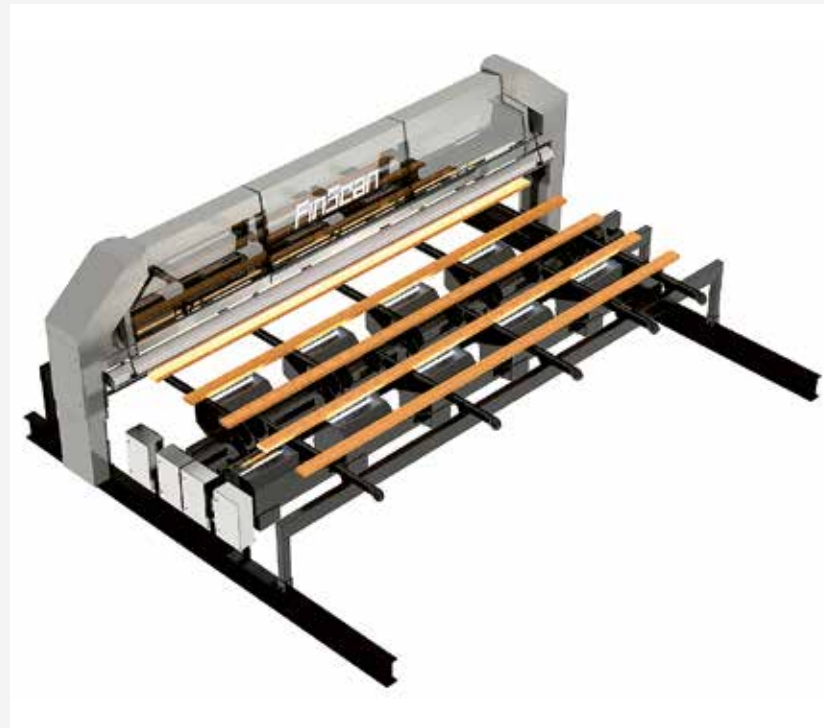
- Modern system optimized for fast grading lines
- Compact, minimum footprint
- No board turning device required

BoardmasterNOVA

- Ideal for fast upgrades of existing BoardMaster systems
- Same amazing scanning and grading results as in the BoardMasterNOVA-N

Boardmaster HDL

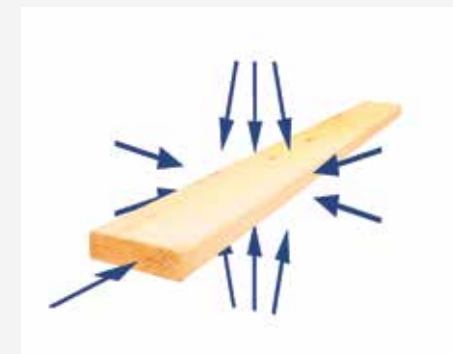
- Economical solution for less demanding applications
- Perfect solution for smaller sawmills



BoardMasterNOVA-N grading system



Mobile display for standard reports



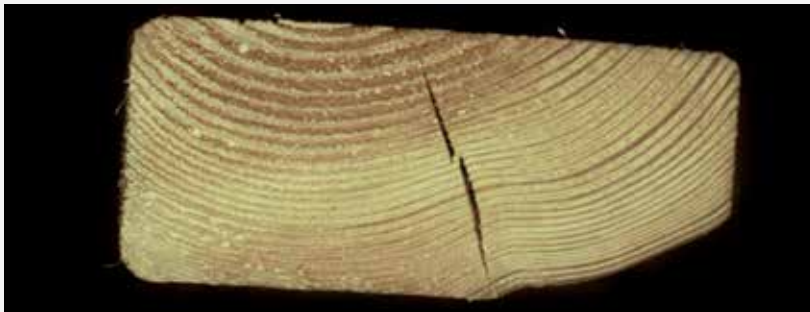
Scanning principle

EndSpy – extra power for grading

EndSpy is a board end analyzer for green or dry lumber. It can be installed as a stand-alone analyzer or combined with BoardMasterNOVA to provide more information about the value of the boards on the production line.

Benefits of EndSpy

- Production control and optimization in the sawmill or planer mill
- Inner / outer board recognition
- Sorting and grading
- Strength grading of lumber (pre-grading / final grading)
- Turning of boards based on pith position and cup



Board end analysis



User friendly reporting

MoistSpy – moisture analyzer

MoistSpy analyzes the moisture content and moisture profile of the boards. By combining MoistSpy with BoardMasterNOVA and EndSpy, sawmills gain additional information about grading, optimization and strength analysis of their boards.

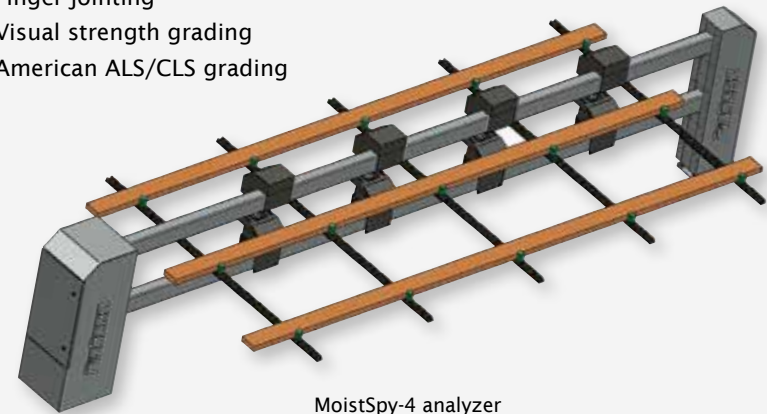
FinScan grading systems

include many special software applications for remanufacturing and for the end use of boards

- Shop grading for door and window frames
- Component grading
- Cut-in-two solutions
- Ripping solutions
- Re-edging solutions
- Finger jointing
- Visual strength grading
- American ALS/CLS grading

Benefits of MoistSpy

- Fast and accurate moisture profile measurement
- Grading of drying errors
- Kiln monitoring
- Low need of maintenance



MoistSpy-4 analyzer

FinScan grading systems guarantee optimal grading for various customer requirements. The systems suit perfectly equally for small and large sawmills. Systems are used on edgers, green grading lines, dry grading lines, combolines (green/dry) and planer lines.

With automatic grading system the value yield and profit is increased, the production speed is enhanced and constant quality is secured to the customers. The system manages even the most complex quality rules and follows up the production.

FinScan has experience from 20 different wood species.
400 deliveries to 20 countries makes BoardMaster the most famous grading scanner for the sawmill applications.

BoardMaster®, EndSpy®, FinScan® and MoistSpy® are registered trademarks of FinScan Oy.



FinScan

...what we see is what you saw...

FinScan Oy
Lukupurontie 2, 02200 Espoo, Finland
Contact: +358 9 435 5430

www.finscan.fi

FinScan Inc., North America
Canada contact : +1 604 619 0672
USA contact : +1 312 543 6049

www.finscaninc.com